

NEVADA



# UNR ARMY ROTC

## Nurse Cadet Guide



**WESTERN REGION HEADQUARTERS  
BLDG 1010 LIGGETT AVE  
FORT LEWIS, WA 98433-9500**

	<u>PHONE</u> / <u>FAX</u>
WESTERN REGION NURSE COUNSELOR	(253) 967-9619 / 9815
8th BRIGADE NURSE COUNSELOR Louisiana, Alabama, Mississippi, Florida Pan Handle	(256) 955-0859 / 7579
9th BRIGADE NURSE COUNSELOR Wisconsin, Michigan, Indiana, Northern Illinois	(847) 266-3097 / 3095
10th BRIGADE NURSE COUNSELOR Oklahoma, Arkansas, Missouri, Southern Illinois	(573) 569-1986 / 0277
11th BRIGADE NURSE COUNSELOR North Dakota, South Dakota, Minnesota, Wyoming, Nebraska, Iowa, Colorado, Kansas	(719) 526-9264 / 0633
12th BRIGADE NURSE COUNSELOR New Mexico, Southern Oklahoma, Texas	(210) 295-2007 / 2018
13th BRIGADE NURSE COUNSELOR Alaska, Hawaii, Guam, Washington, Oregon Idaho, Montana	(253) 967-5383 / 8527
14th BRIGADE NURSE COUNSELOR California, Nevada, Utah, Arizona	(831) 242-7697 / 7696



# Table of Contents

7KH 86 \$UP\ 1XUVH &RUSV « « « « « « « « « « « 4 « « « «  
Army ROTC – 7KH (GJH « « « « « « « « « « « « « « « « « « «  
\$UP\ 527& 3URJUDP %DVLV « « « « « « « « « « « « « « « « « « «  
1XUVH 6XPPHU 7UDLQLQJ 3URJUDP « « « « « « « « « « « « « « « « « «  
)LQDQFLDO %HQHILWV IRU 6FKRRO « « « « « « « « « « « « « « « « « « «  
2IILFHU 6DODU\ &RPSDULVRQ « « « « « « « « « « « « « « « « « « «  
\$IWHU \*UDGXDWLRQ «



ARMY ROTC



ARMY ROTC

The Smartest College Course You Can Take



Once on active duty, you will attend the Officer Basic Course, where you will learn more about the Army Medical Department, field nursing, and the documentation system used in the Army hospitals. The Army Medical Department is on the forefront of computerized charting –creating a QDWLRQZLGH VWDQGDUG VR \RX GRQ¶W KDYH WR you change locations.

As Nurse Corps Officers, our primary mission is to provide health care to service members and their families, at home and abroad, in times of peace and war

**Army Nursing ±The ROTC Edge**  
**Leadership**



The Reserve Officer Training Corps (ROTC) provides an opportunity for college nursing students to receive practical, hands-on leadership ex



The NSTP is a paid three-to-four week clinical elective for Army ROTC nurse cadets. Attendance is voluntary. Our affiliated nursing school awards academic credit for this program.

This elective is conducted at Army hospitals in the United States, Germany and Korea. You get paid while attending NSTP during the same summer as Advanced Camp, which is usually between the Junior and Senior year of college.

During the NSTP clinical elective, you will receive "hands on" experience under the direct supervision of a preceptor -- an Army Nurse Corps officer who works with you one-on-one. Regular coaching sessions enhances your progress, while also providing feedback about your performance.

While you follow the same duty schedule as your preceptor, you may receive training in several areas, including patient assessment, planning of patient care, nutrition maintenance and feeding techniques, range of motion and mobility, medication administration, emergency procedures, intravenous (IV) therapy, and other special procedures and techniques.



ARMY ROTC

The Smartest College Course You Can Take





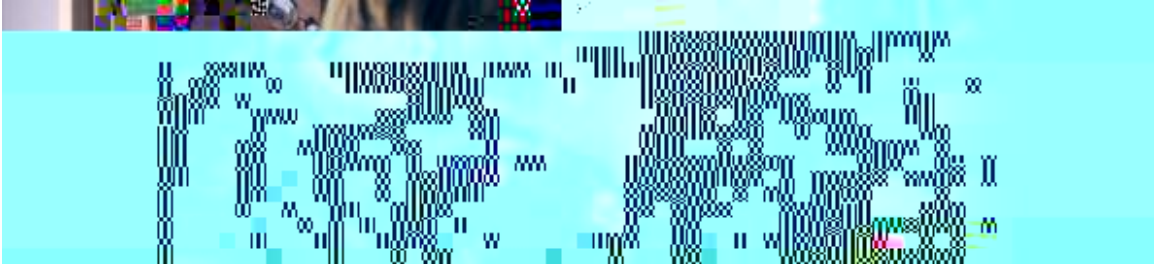


**Scholar**



## **Additional Benefits Package**

i



After graduation, you will be commissioned as a 2<sup>nd</sup> Lieutenant in the United States Army. Your first assignment, which is determined by evaluating your college performance, ROTC standing, and your preferences, can be one of over 25 hospitals in the continental United States, Alaska, Hawaii, Germany or Korea.

Before you go to your first assignment, you will attend the Officer Basic Course at Fort Sam Houston, Texas, where you will study basic army knowledge and the functioning of an army unit.

Once you have been working as an Army nurse (on active duty for one year), you are eligible to attend a clinical specialty course of your choice. Currently, the course choices are:

- Critical Care Nursing
- Emergency Nursing
- Preoperative Nursing
- Obstetrical and Gynecological Nursing
- Psychiatric & Mental Health Nursing
- Community Health Nursing

## **Service Ob**

completion of the first three years, you may elect to continue on Active Duty or enter the Army Reserves for the remaining five years.

## **Specialized**

## Community Health Nursing

