



—



7KLV UHVRXUFH LV QRW LQWHQGHHG WR VXEVWUDLWV LQ ORHUQFRXQJ RPHHG \$GRV DGHQW ZWV
 DUH XOWLPDWHO\ UHVSQRVLEOH IRU FKHFNLQJ WKHLU QVX(US' \$ \$ \$ DGHUPLFH5 DGH LWHDP
 PHQWV DUTRPHW 6WXGHQW &HQWHU 'DVKERDUG ! 0\ \$FDGHPFLV ! \$FDGHP

) — • š 6 • • • • > ca • š — • š > • 3 " % — — ' — • , CE • % >

,GHDO VW 6HPHVWHU -5
 ,6
 \$ & &
 \$ & &
 & RP
 0*7 RU (1*

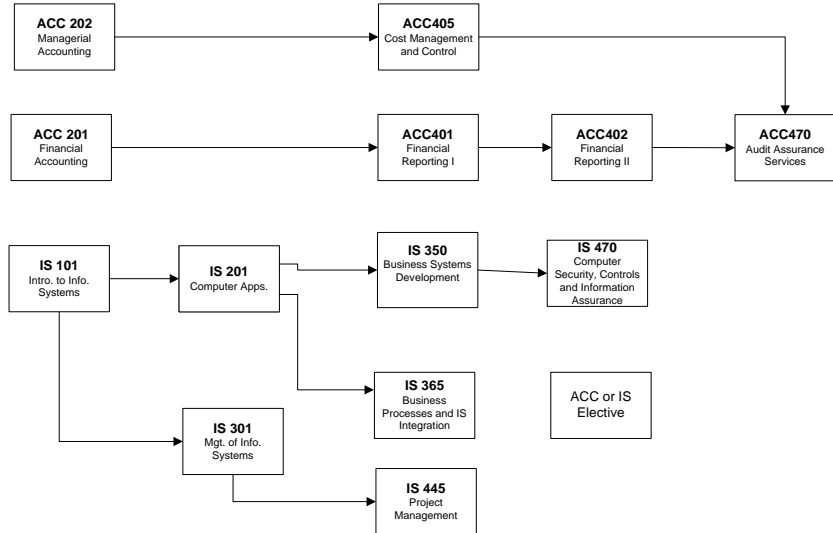
,GHDO 6HPHVWHU
 \$ & &
 ,6
 ,6
 0*7 01
 6 & 0

,GHDO VW 6HPHVWHU 65
 ,6
 ,6
 (FR305² & 2
)LQ
 0*7

,GHDO QG 6HPHVWHU 65
 0*7
 \$ & &
 \$ & & ,6 (OHFWLYH
 *HQ (OHFWHHGHG

\$ CE ž ' > ' — • 7 % — • % Ÿ % j >

7DNH ,6 ZKLOH W-DXVQ & RWKH 3UH
 ,6 LV 127-USHXKLVVWH WR ,6
 8SSHU GYLVLVRQ ,6 FRXUVHV DUH W\SLFDOO\ QRW RIIHUG GXULQJ WKH 6XP
 (FRQ LV XV RDIHQW H G R I O L Q J W K H) D O O V H P H V W H U
 \$ O O \$ & & F R X U V H V W K D W D U H S U H U H T X L V L W H V W R R W K R R \$ \$ Q R O X U V D W W H H E S O U D
 D F F R X Q W L Q J F R X U V H W Z L F H L I \ R X G R Q R W J H W D & R U E H W W H U R Q H L W K H U D V



\$ " " 0 % ' — š >

(QUROOLQJ LQ \RXU 0*7 6WUDWHJLF 0DQDJHPHQW &DSVWRQH &RXUVH
 7\SLFDOO\ W\SLFDOO\ LQ \RXU ODVW VHPHVWHU
 3UHUHTXLVVLWHV & (1RU & + RU R & + 0*01,) , 1 6 & 0

*UDGXDWLRQ 5HTXLUHPHQWV
 FUHGLWV HDUQHG 'WRG RPHUWH %DIFKHORR BHQWV
 815 &XPXODWLYH ODMRU \$1' 0LQRU *3\$V
 XSSGUYLVLRQ FUHGLWV HDUQHG DW 815
 XSSGUYLVLRQ FUHGLWV UHTXLUH IRU GHJUHH

\$SSO\LQJUDGXDWLRQ
 (OLJLEOH F X W X H E Q W W J U D G X D W L R Q 1 D S S O F D W L R Q V L Q
 0DUFK VW IRU 6SULQJ JUDGXDWLRQ DSSOLFDWLRQ RSHQV 1RYHPEHU VW
 -XQH VW IRU 6XPPHU JUDGXDWLRQ DSSOLFDWLRQ RSHQV 0DUFK
 2FWREHU VW IRU)DOO JUDGXDWLRQ DSSOLFDWLRQ RSHQV